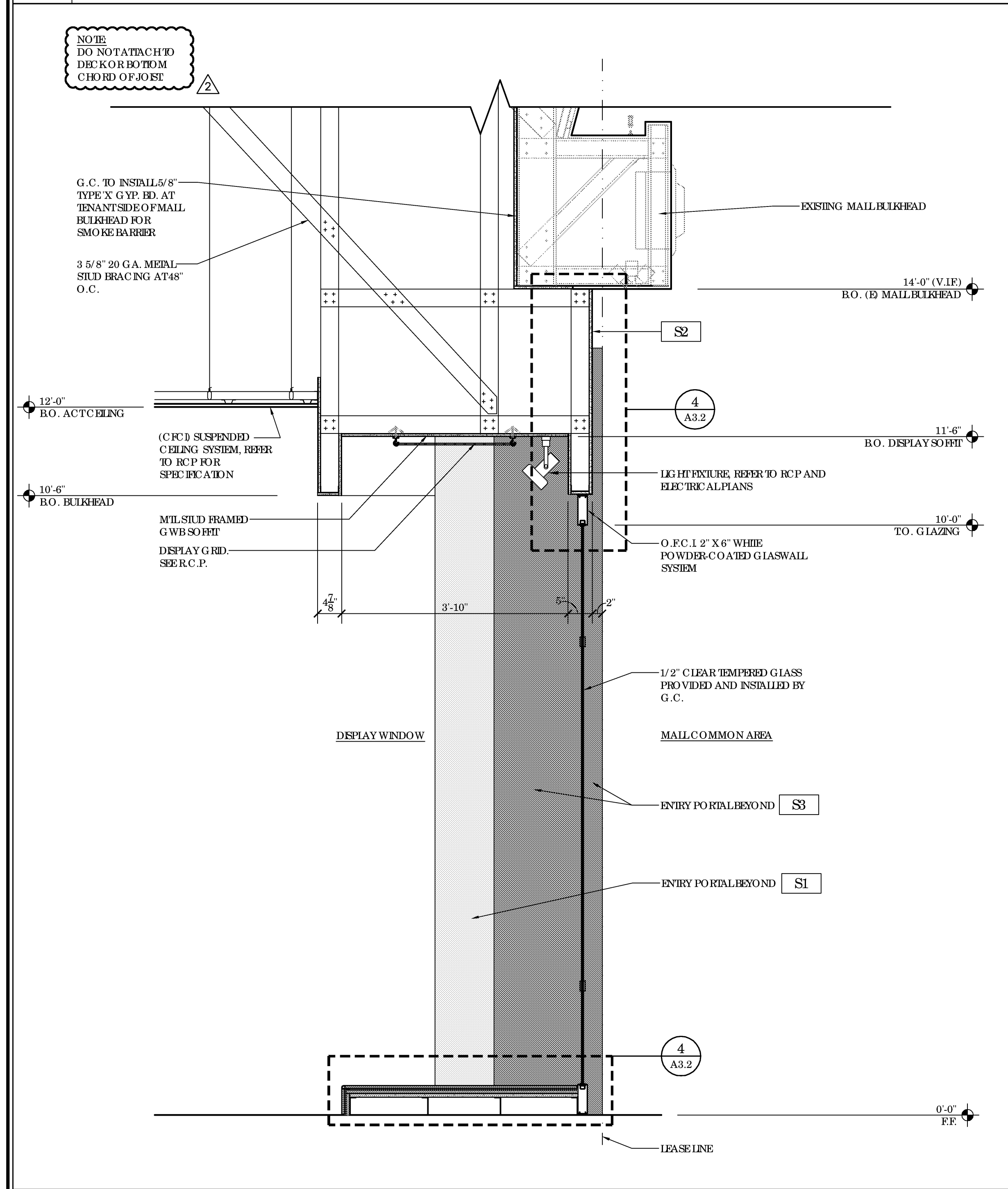
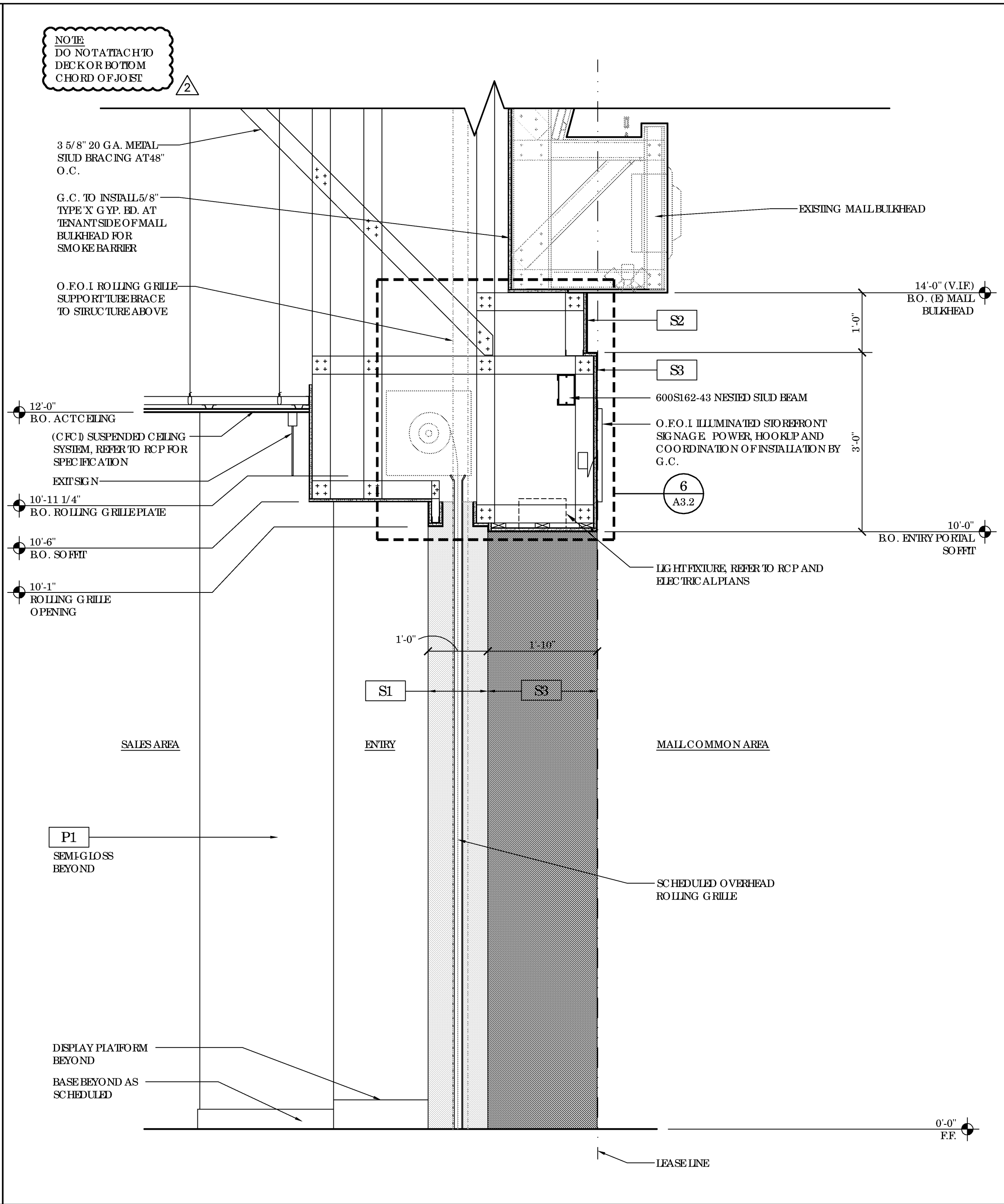


- GENERAL NOTES**
- A. ALL METALS USED ON JOBS TO BE CPO APPROVED.
 - B. PATCH AND PAINT BULKHEAD. CONTACT MAILMANAGER.
 - C. REFER TO SHEET FINISH FLOOR PLAN FOR SCHEDULE A1.4.
 - D. SIO REFRONT GLASS SHOP DRAWINGS ARE REQUIRED AND ARE TO BE APPROVED BY OWNER PRIOR TO FABRICATION.
 - E. SIGNAGE WILL REQUIRE DESIGN REVIEW BY THE LANDLORD AS A SEPARATE SUBMITTAL WHICH INCLUDES WINDOW GRAPHICS. IT WILL ALSO REQUIRE A SEPARATE PERMIT WITH THE CITY. THE LOCATION OF THE SIGNAGE MUST BE REVIEWED IN THE FIELD WITH THE LANDLORD PRIOR TO INSTALLATION.
 - F. WINDOW AND DOOR SYSTEMS MANUFACTURER SHALL DESIGN AND SUPPLY ALL CONNECTION MATERIALS (INCLUDING EMBEDDED BEAMS, DIAGONAL BRACING ANGLES, BRACKETS, OUTRIGGERS, ETC.) AS REQUIRED FOR THE SUPPORT OF THE WINDOW AND DOOR SYSTEMS.
 - G. BUTT JOINT GAPS NOT TO EXCEED 1/4"
 - H. SIO REFRONT MUST BE SELF-SUPPORTING.

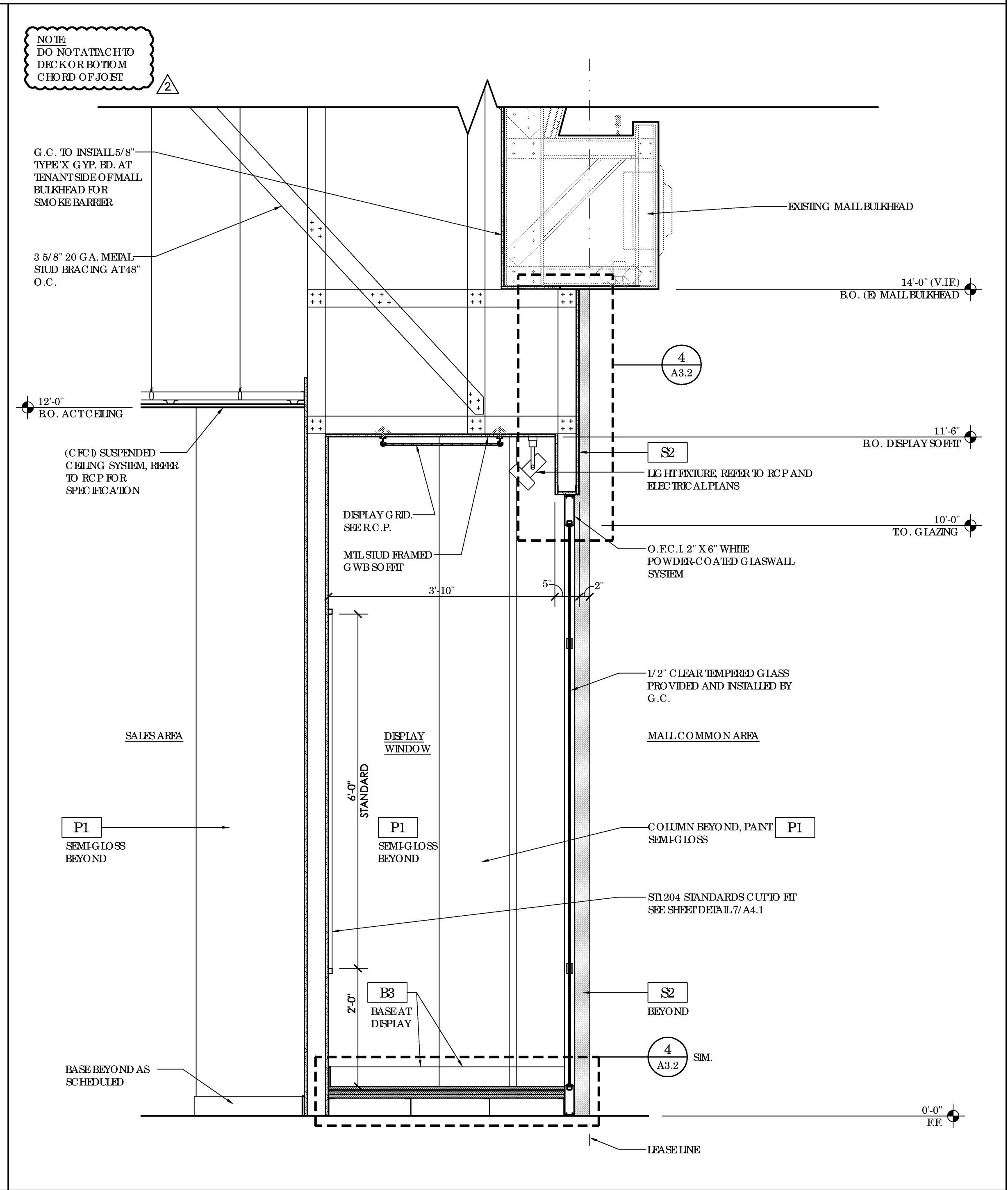
1 SIO REFRONT ELEVATION
SCALE 1/2" = 1'-0"



2 SIO REFRONT SECTION
SCALE 3/4" = 1'-0"



3 SIO REFRONT SECTION
SCALE 3/4" = 1'-0"



4 SIO REFRONT SECTION
SCALE 3/4" = 1'-0"

FREDERICK J. GOGULA
ARCHITECT, NOAB, FDI
1850 GRAY ROAD, SUITE 300
ST. LOUIS, MO 63146
PH: (314) 415-2400 FAX: (314) 415-2300
www.fjg.com

charlotte russe

UNIVERSITY TOWN CENTER
140 UNIVERSITY TOWN CENTER DRIVE - SUITE #20
SAPASOTA, FL 34243
SPACE # 210 STORE # 786

REV	DATE	DESCRIPTION	NAME
1	07/28/14	ISSUE TO PERMIT	
2	07/28/14	OWNER	
3	10/06/14	ISSUE TO BID	

PROJECT NO. 14064
DRAWN BY: LAT
CHECKED BY: CSW
DATE: 07/28/14
SCALE: NOT TO SCALE
NOT BE USED FOR CONSTRUCTION

A3.1